



HYCOM DATASHEET

TEST BENCH FOR HYDRAULIC PUMPS AND MOTORS
Maximum output power up to 240kW

FEATURES

- COST EFFICIENT DESIGN DUE TO LOW INPUT POWER REQUIREMENT OF MAX. 120KW
- TESTING OF OPEN AND CLOSED LOOP PUMPS AND MOTORS UP TO 265KW HYDRAULIC POWER
- PRESSURE TESTING UP TO 420 BAR
- OIL FLOW VALIDATOIN TESTING UP TO 600 L/MIN INCL. FLOW CONTROL
- INTEGRATED VARIABLE SPEED CONTROL
- EASY TO OPERATE CENTRAL PLC CONTROL AND DATA LOGGING

POWER

INPUT POWER 120KW
OUTPUT SHAFT POWER 265KW
TORQUE 2.060 NM

PUMP TYPES

UP TO 750 CC/REV
0 .. 420 BAR
OPEN / CLOSED LOOP

CONTROL OPTIONS

PRESSURE
FLOW
SECONDARY

DESIGN

DRIVE

- Variable speed drive e-motor (VFD)
- 400VAC @ 50Hz
- 100 – 2400 RPM

HYDRAULICS

- Hydraulic reservoir content 1.200 Liter with:
 - Fluid level and temperature control
 - Air dryer / breather
 - Suction valve incl. proximity switch
 - Inspection cover
 - Drain valve
 - Filling connection
- Hydraulic pumps
- Control Manifold
- Hydraulic filtration:
 - Pressure filter
 - Return line filter
 - Offline fine filtration
- Hydraulic oil- air cooler

SENSORS

- Pressure sensors 0 .. 600 bar ($\pm 0,25\%$ FS)
- Temperature sensor
- Flow sensors (turbine type)
- RPM sensor
- Condition monitoring

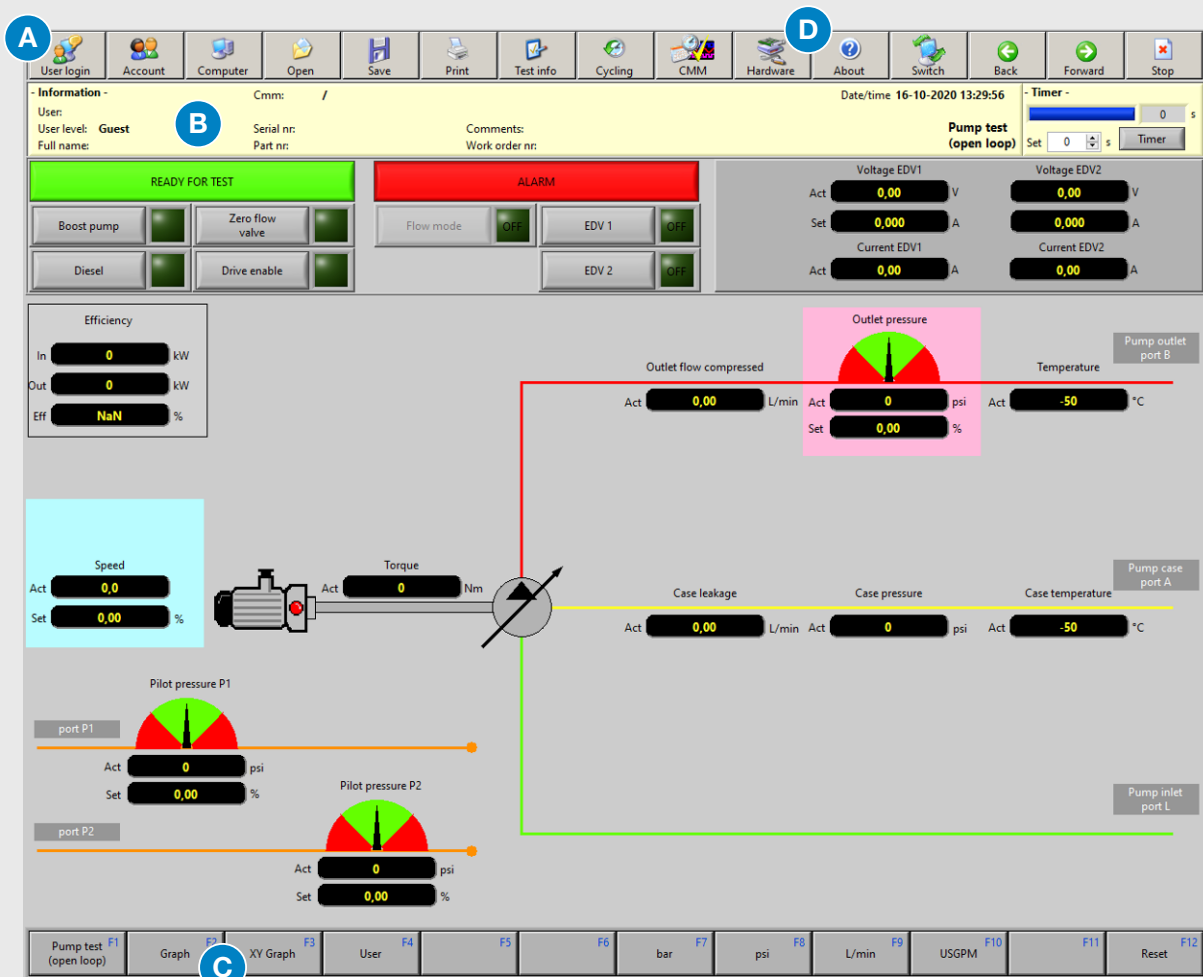
CONTROL SYSTEM

- HYDAC TTC-580 PLC with High Performance 32-bit dual-core lockstep CPU
- PC control interface for monitoring and logging of:
 - Flow
 - Pressure
 - Speed
 - Oil Cleanliness level
 - Graphic visualization in GUI and logging functionality
 - Possibility to export data to several formats

MECHANICAL DESIGN

- Solid and robust design with large access sliding doors to testing area
- Spacious and well accessible working area for connecting the pump to the test bench
- Safety doors with interlock to testing operating interface for safety control
- Electrical connection plugs and pressure read out directly at pump test location
- Modular pump mounting interface with various flange adaption interfaces
- Extendable oil leak tray below pump test area
- Large access doors and hatches to HPU room and control cabinet
- Customized color and company logo on request

USER INTERFACE



- A** PC control interface with dual screen visualization
- B** Test sequence recording per customer or pump type
- C** X-t and X-Y graphical multi-channel logger, free configurable, logging interval 5ms
- D** Sensor calibration and due date monitoring

TECHNICAL DATA

GENERAL

Main power supply
Overall dimensions
Hydraulic reservoir
Noise level

Connection socket 400V – 50Hz
3.900 x 3.000 x 2.800 (L x W x H)
1.200 liter ISO VG32/46
Less than 80 dbA at 1 meter distance

HYDRAULIC

- Maximum flow 525 l/min
- Maximum 420 bar operating pressure at reduced flow
- High pressure filtration 3µm
- Return line filtration 10µm
- Offline conditioning filtration 3µm
- All filters with electrical - visual clogging indicators

HYDRAULIC

A	: Pressure 1	SAE 2"
F	: Return	SAE 2"
B	: Pressure 2	SAE 2"
PP	: Pilot 1	G1½"
PP1	: Pilot 2	G1½"
PP2	: Pilot 3	G1½"
Y	: Drain	G1"

MEASUREMENT

Pressure Gauge P1

0-400 bar
Accuracy 1% of full scale

Pressure Gauge P2

0-400 bar
Accuracy 1% of full scale

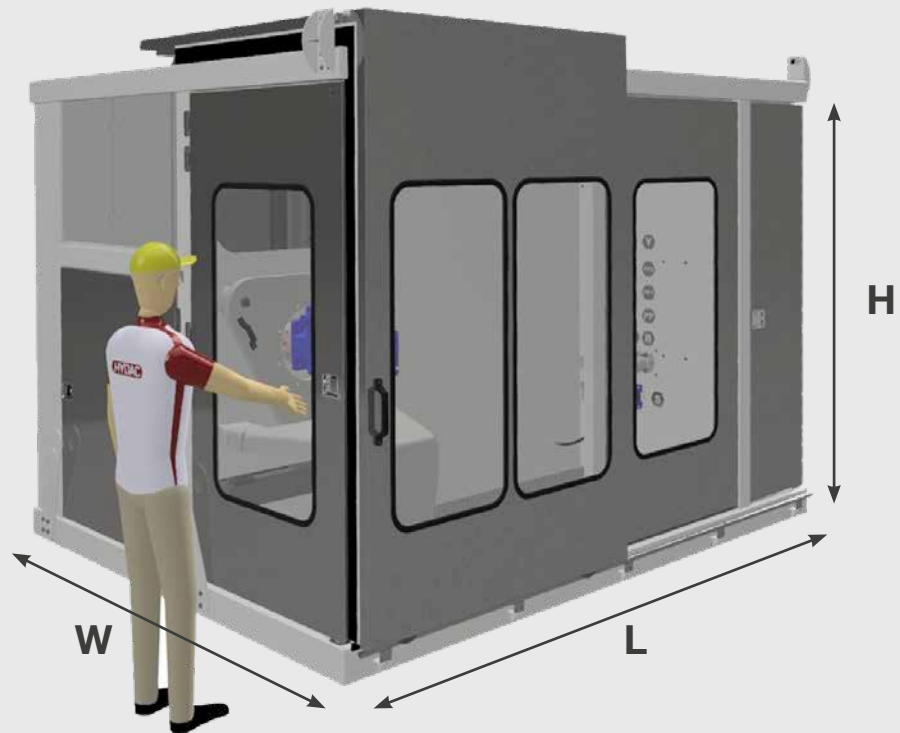
Digital readout of actual flow and pressure at $\pm 0,25\%$ of full scale

POWER

Supply
Current

3 Ph.+N+Pe 380/420 V – 50/60 Hz, other on request
230 A

DIMENSIONS & WEIGHT



LENGTH	3.230 mm
WIDTH	1750 mm
HEIGHT	1625 mm
WEIGHT	approx. 5500 kg

POSSIBLE OPTIONS

Z = Quick disconnect couplings to connect hoses

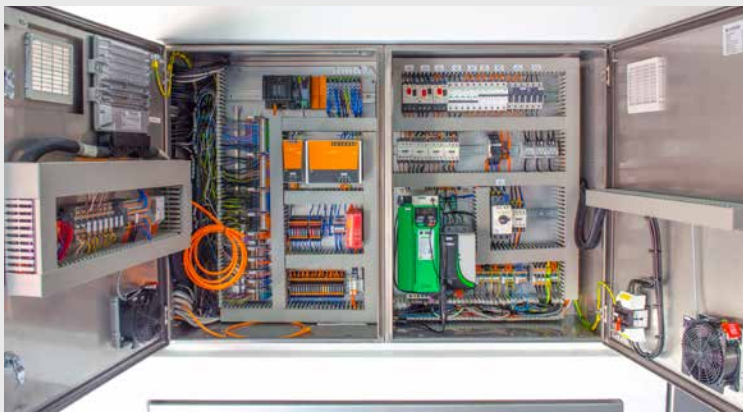
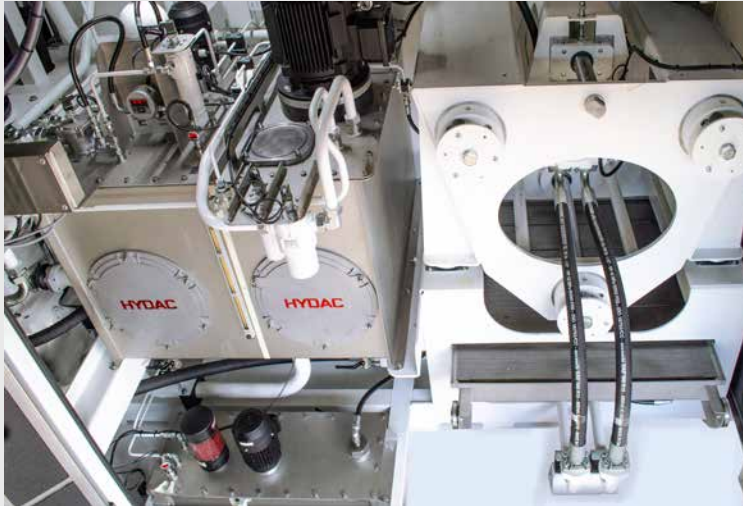
FAM = Integrated purifier for filtering, degassing and dewatering

Other options and accessories are available upon request.

IMAGES



IMAGES





HYCOM B.V.
PART OF HYDAC INTERNATIONAL

P.O. BOX 1079 | 7301 BH APELDOORN
ANTILLEN 43 | 7333 PE APELDOORN

T +31 88 0597 200

E INFO@HYCOM.NL | W WWW.HYCOM.NL